

# Patt's Garden Center Quarterly

April, May, June 2017

## New Kid on the Block

As many of you know, we recently added a new 4-legged staff member to our roster. Keep an eye out for Posie, my 4 month old Bernedoodle, as she'll be on the job daily now. She's still learning to be on her best behavior; if you bring your dog for a visit, please keep it on a leash.

While you're here visiting Posie, be sure to browse our large selection of blooming annuals and perennials, trees, shrubs and vegetables. As usual, most of our bedding plants and veggies are grown right here and Patt's.

We have a beautiful assortment of ceramic pottery and birdbaths, as well as gazing globes and stands, shepherd's hooks, metal wall art and more.

- Kate & the Staff at Patt's



## Farewell, friend

"You'll never meet a kinder man than John Desimone." That's the truth.

Our dear friend and coworker John was a true gentleman; humble and kind with a subtle sense of humor that could coax a smile out of the toughest customer.

John worked with us for 7 years, keeping our transplanters Sally and Lori supplied with full flats, filling our vegetable tables with plants out of our greenhouses and doing pretty much anything else we ever asked of him. We all reaped the benefits of his enormous garden, delighting in fresh Kohlrabi, Corn and Peppers each summer. We were so fortunate to call him part of our Patt's family. It just won't be the same around here without his

gentle laugh and his usual

"How 'bout those Zags?"

Rest easy, Big John. We'll miss you.



## Growing a Garden

It's so satisfying to grow your own food, isn't it? We have everything you need to get growing, from veggie starts to supplies like Hot Caps, Walls o' Water and fertilizer. You can grow a bounty of food even in a small space, so ask us about container-sized options. Just make sure your site will get at least 6 hours of good sun and plenty of water. We grow our own Tomatoes, Peppers, Cucumbers, Squash, Eggplant and more and we'll have Kale, Spinach, Kohlrabi, Cauliflower and tons more available throughout May and June.

Keep an eye out for creepy crawlies like Squash Bugs and Aphids, as they tend to show up as soon as your plants begin to set fruit. Maintaining a regular schedule of spraying or sprinkling bait will keep critters at bay.



## Delightful Dogwoods

How can you tell if it's a Dogwood tree?

By its bark, of course!

This Laffy Taffy wrapper joke has (un)impressed many a grade school fieldtrip participant, lemme tell ya.

Seriously though, we love Dogwoods around here! With the Dogwood Festival fast approaching, you'll start seeing these beauties burst into bloom mid-April through May. Choose from traditional *Cornus florida* varieties like 'Cherokee Chief' (deep pink/red) and 'Cloud Nine' (white) and others. Or, try a *Cornus kousa* that will bloom a little later in the year. 'Venus' (white) is our favorite kousa variety and you can see them planted at the Lewiston City Library. We have several sizes and varieties available.



### April In The Garden

- ◆ Control root weevils now. New products available.
- ◆ Watch for slugs and snails. Control them before they multiply. Bait around new growth.
- ◆ When transplanting, use a solution of B-1 to encourage root growth and continue with a regular fertilizing schedule.
- ◆ Divide and rejuvenate perennials—share with a friend!
- ◆ Spray fruit trees after petal drop to prevent insects from ruining your fruit crop. Both chemical and organic options are available.
- ◆ Weed and thin strawberry beds.
- ◆ Apply rose systemic and fertilizer once 1 inch of new growth has emerged. Deep-water after feeding. Cut deadwood from climbing roses.
- ◆ Direct-sow or transplant cold tolerant herbs and vegetables. Thin early plantings of seedlings. Rotate crops yearly to replenish the soil and prevent the build-up of pathogens.
- ◆ Fertilize azaleas, rhododendrons, trees, shrubs, container plants, and fruit trees. Water thoroughly after fertilizing.
- ◆ If you have billbug damage (brown irregular shaped patches) to your lawn in the past, an April application of grub control may prevent the build-up of larva populations to damaging levels.
- ◆ Add yard debris from clean-up to the compost pile.
- ◆ Amend the soil with organic matter such as peat moss, compost, or well-aged manure.
- ◆ Now is the time to start adjusting the soil pH in order to change the color of your hydrangea blooms.
- ◆ Start to plant your potatoes and onions now.
- ◆ **Easter Basket Workshop April 13th is SOLD OUT!**

### May In The Garden

- ◆ Don't forget to leave May Baskets for your neighbors and loved ones!
- ◆ Pinch back fall-blooming chrysanthemums every two weeks through the months of May and June to thicken plants and delay bloom.
- ◆ Plant warm season crops and seed (melons, cucumbers, corn) when danger of frost has passed.
- ◆ Lightly fertilize newly transplanted seedlings.
- ◆ Beautiful Memorial Pots available week of May 20th.
- ♥ **Remember Mom w/a gift from Patt's! May 14th is Mother's Day!**

### May In The Garden, cont.

- ◆ Begin planting annuals. Stop by Patt's to find your old favorites, as well as new and unique choices.
- ◆ Continue root weevil control.
- ◆ Deadhead rhodies by cutting off faded blooms.
- ◆ Apply liquid herbicide when weeds are still small and actively growing to control broadleaf weeds in lawns.
- ◆ Set out plants of tomatoes, eggplant, melons, cucumber, squash and peppers.

### June In The Garden

- ◆ Spray roses for black spot and powdery mildew. If you've had problems in the past, spray as a preventative measure. Fertilize roses.
- ◆ Thin and tie up brambles. Pinch runners on newly planted strawberries. Use netting to protect berries from birds. Top-dress established plants with fertilizer or compost.
- ◆ **Remember Dad with a gift from Patt's! Father's Day is June 18th.**
- ◆ Thin fruit after the trees naturally drop their unpollinated fruit. Thin triple clusters to doubles and double clusters to singles.
- ◆ Feed new and established lawns.
- ◆ Deep water (all the way through the roots) all plantings, including areas where automatic irrigation might not reach fully.
- ◆ Continue to pinch back mums.
- ◆ Harvest roses so the cut is just above a leaflet with five, not three, leaves. You won't get new growth (flowers) if you cut above a three-leaf leaflet.
- ◆ Clip hedges so they are slightly wider at the bottom than the top. If you shear hedges twice a year, do it early June and again in early fall. Avoid mid-summer pruning as it can lead to sunburn on tender shaded undergrowth.
- ◆ To keep groundcover and low perennials compact, shear them back after the blooms have faded. Water them well and scatter a complete granular fertilizer over the area.
- ◆ Snap the tender new growth of pines (called candles) in half to control their size.
- ◆ Deadhead faded blossoms to prevent seed from setting which reduces flowering.

## Berry Excited

Our berry vines and bushes are ripe for the pickin'! Choose from great potted Blueberries, Raspberries, Blackberries, Goji Berries, even Gooseberry! Berries do quite well here in the Valley, provided you put each kind in the right site in your yard. **Blueberries** prefer afternoon shade and require slightly acidic soil, so you may have some amending to do when you plant them. **Raspberries** and **Blackberries** love full sun, but will need something to support their arching canes, like a fence or trellis. **Goji Berries** are a fun addition for us—an unusual oblong superfruit with antioxidant and anti-inflammatory properties—and will mature to a bushy 4'x4' shape in full sun. And there's nothing quite like Gooseberry pie, so plant a few **Gooseberry** bushes in your harshest spot and watch them thrive. Careful when you harvest, though...watch those

thorns! **Strawberries** are fun and easy to grow in containers or in the ground in a sunny spot. Try a few or try them all this summer!



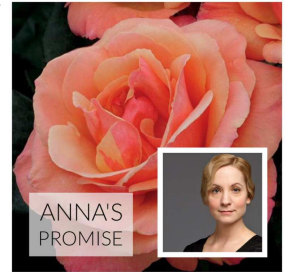
## A real Hum-dinger!

Treat your hummingbirds to a new type of feeder this year! The revolutionary Hummerbar provides multiple feeder ports to feed maximum amounts of Hummingbirds in a unique horizontal system. You'll love watching the flocks of birds arrive. Make feeding extra easy with pre-mixed nectar! We have quart and gallon sized ready to use nectar in a high energy formula that birds love. Just pour it in the feeder and you're good to go! Hummers get a little worn out when they eat, so be sure to grab a Hummingbird Swing to hang near by. These little perches provide a unique and fun resting spot for visiting birds.



## Downton Abbey

If you were a fan of the British period drama Downton Abbey, you'll be thrilled to know you can have a Downton-worthy rose garden! Weeks Roses has introduced a 4-rose collection named for Downton characters. If you're not familiar with the series, Downton Abbey centers around the aristocratic Crawley family and their domestic servants in 1900s England. As with any regal British family, the Crawley family tree has many branches and all are intertwined with their own stories and scandals.

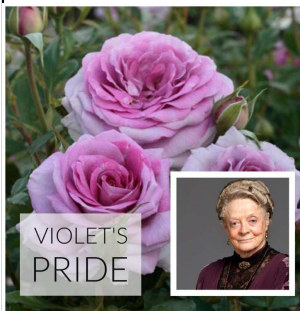
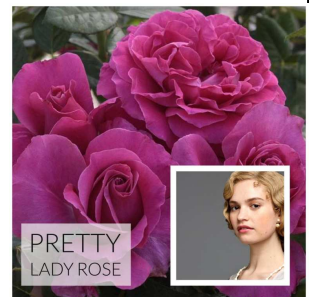


Throughout the series one comes to know and love the staff of the gorgeous Abbey, a favorite of which is head housemaid Anna. A beautiful peachy-orange Floribunda named 'Anna's Promise' will look great alongside the newest introduction named for Lady

Edith's daughter, a marigold-yellow shrub rose called 'Edith's Darling' with a compact habit suitable for containers. Lady Edith and her two sisters spend much of the series trying to understand their adventurous and bright cousin Lady Rose, a minor character who makes a big splash with her daring wardrobe and antics.

The vibrant pink and old rose fragrance of 'Pretty Lady Rose' are as lovely as her character.

Another beloved character is the cantankerous matriarch of the family, Violet Crawley. Granny always has something to say about propriety and fragrant roses. The subdued lavender hues of 'Violet's Pride' are a perfect representation of her.





Patt's Garden Center  
1280 Port Drive  
Clarkston, WA 99403  
(509) 758-4104  
[www.pattsgardencenter.com](http://www.pattsgardencenter.com)

## **Spring Happenings at Patt's**

**Mark your calendars because we have a fun few months ahead of us!**

**April is Arbor Month!** It's the perfect time to plant trees, so enjoy 10% off all Shade, Flowering and Ornamental trees throughout the month.

**April 2nd—Don's Birthday.** Stop by to wish our boss, Dad and head grower a Happy Birthday!

**Easter is April 16th.** Hop in to Patt's for great kids Easter gifts as well as gifts for your favorite gardener.

**May Day is May 1st! Don't forget to leave a May Basket for someone you love.**

**May 12-14th: Mother's Day weekend SALE.** Keep an eye out for advertisements in the Lewiston Morning Tribune and on Facebook.

**May 20th:** Memorial Pots are available. Come check out our selection!

**June 18th:** Father's Day weekend SALE. Watch for ads in the Lewiston Morning Tribune and on Facebook.

**Visit us often in April, May and June to check out our selection of vegetables, annuals and perennials grown right here at Patt's!**

**Spring Hours: Monday –Saturday 8am-5pm Sunday 10am-4pm**

