

Patt's Garden Center Quarterly

October, November, December 2021

Happy Fall, y'all!

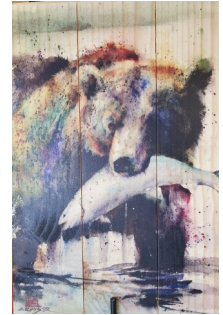
After a long, hot summer we're so grateful for cool mornings and fall flowers. We've stocked up on beautiful blooming pansies and violas, chrysanthemums, ornamental cabbage and kale, hellebores and all your other seasonal favorites. We've enjoyed dressing up Posie the Patt's pooch in a different outfit each day in October, thank you for playing along with us! We're excited about all of our new giftware that's arriving daily, our upcoming classes and of course, the upcoming holiday season. Stop by Keep an eye on our Facebook page for event details and new arrivals. We look forward to seeing each of you soon!



- Kate and the Patt's Staff

Great Gifts

We have so many new items in our inventory! We've been adding some great giftware for the garden-er this year like rain chains, rain gauges and outdoor thermometers. We've added locally made HoeDag tools; their entire line up includes the iconic Original HoeDag, hand rake, shovel and long-handled hoe. We have great Washington-made food items in our Pantry including soup mixes, scones and biscuit mixes, loose-leaf teas and more! We have locally made candles from The Tin Can Company, jigsaw puzzles (even our own custom puzzle feature Posie the Patt's Pooch!), metal and wooden



wall art, wooden ornaments, local college sport ornaments and so much more. Be sure to stop by and see us this holiday season.

Holiday Gift Basket Shop & Snack

Join us for a fun evening building one-of-a-kind gift baskets for your friends and family. We'll showcase all of our fun new giftware, PNW-made food items and garden goodies. We'll show you how to put together a lovely gift within any budget using a variety of favorite items from our inventory. We'll put together food baskets featuring soups, scones, jellies and more made in Washington and Oregon. We have locally made candles, loose leaf tea and sweet garden art for spa baskets and you'll love our puzzles, garden markers and tools for your favorite gardener. Join us to see what arrangement suits your fancy. Thursday November 11th, 5:30-7pm.

Plant for Spring Color NOW

Everyone loves the brilliant gold blooms of Forsythia each Spring, bringing with them the promise of warmer weather and more sunshine, but we tend not to think of them until the dreary days in January. Think of your favorite spring color now, and get it planted! Planting spring favorites like Lilacs, Peonies, Forsythia and Quince in the fall allows them to spend the winter working on a good root system, storing up energy to provide you with plenty of bright blooms come Springtime. We're all stocked up with beautiful trees and shrubs for fall planting, as well as your favorite flowering perennials.



The Gardener's October

- ◆ Continue to harvest fruits and vegetables. Watch for frost and protect plants for extended ripening season.
- ◆ Rake fallen healthy leaves and compost them.
- ◆ Cut back leggy and spent perennials. Divide and replant overgrown perennials, remembering to share with a friend, or plant in a container.
- ◆ Pull finished annuals and compost if healthy.
- ◆ Cut gourds leaving 1" of stem remaining and put on screens to dry.
- ◆ Drain hoses and blow out irrigation systems. Flush drip systems with water to clear sediment, then drain lines. If we have a dry fall, leave a hose out since additional watering will be necessary.
- ◆ When weather cools, plant trees and shrubs. Stake new trees if located in a windy area.
- ◆ Dig and properly store summer bulbs. Ask for our handout about Tender Bulb Care.
- ◆ Prune cane berries. Spread fresh compost and mulch.
- ◆ Plant spring-blooming bulbs as soil temperatures cool down.
- ◆ Leave spent blossoms on rose bushes so hips will form and help induce dormancy for winter.
- ◆ Spray rhododendrons and azaleas and other evergreen trees and shrubs with Freeze-Pruf or Wilt Stop to protect from moisture loss (browning leaves) caused by dry winter wind.
- ◆ **Drop in for one of our Make-and-Take Workshops on any Saturday in October! \$50 Fall Container Workshop or \$45 Gorgeous Gourds Workshop. Call to reserve your spot today!**
- ◆ Start to chill spring-blooming bulbs for early indoor forcing. Ask for our handout on forcing bulbs.
- ◆ Sow Garden Sweet fall cover crop now. Till under and use as green manure next spring.
- ◆ **Visit us for beautiful and unusual locally grown pumpkins, gourds and squash. Take festive photos with our '51 Ford pick up and Posie, too!**

The Gardener's November

- ◆ Join us for **Shop & Snack November 11th, 5:30-7pm**. Browse new giftware, sample food items and build your own gift basket!
- ◆ **Attend our Holiday Wreath Workshop Nov 27th**. Build your own fresh evergreen wreath with fragrant boughs and pinecones. Call us to reserve your spot! \$40 per wreath.
- ◆ **Join us for Small Business Saturday November 27th.**

The Gardener's November Continued

- ◆ Clean and sharpen outdoor garden equipment and store for winter.
- ◆ Prepare roses for winter by pruning between knee to waist high. Strip leaves. Attach ramblers and climbers to supports for protection against wind. Mulch to a depth of 10-12" once the ground has cooled down after several frosts. Use a liquid copper dormant spray to protect against fungus and a oil spray to fight off insects. Ask for our handout on Preparing Roses for Winter.
- ◆ Continue to harvest hardy vegetables.
- ◆ Watch for earwigs. Bait or use traps of rolled newspaper. Hand pick snails and slugs or use bait.
- ◆ **Dormant spray fruit trees after leaves have fallen. For information on disease and insect spray schedules for apples and pears, visit your local extension office and ask for a bulletin on spray schedules for fruit trees.**
- ◆ **November is the perfect time to purchase Amaryllis and Paperwhite bulbs** for holiday blooms. Plant every two weeks for extended bloom through the holidays.
- ◆ Collect stakes and trellises; clean and store them for next season. Disinfect seedling containers. Clean gutters of fallen leaves.
- ◆ Continue to rake and compost fallen leaves or run over them with a mower and use as mulch.
- ◆ Clean up and destroy leaves of Crabapple and Hawthorn when they've fallen. After leaf fall, dormant spray with a copper fungicide to protect against fireblight and leaf spot.
- ◆ Prune dead or diseased wood from trees and shrubs.

The Gardener's December

- ◆ Check winter protection of trees and shrubs. Deep water trees and shrubs that precipitation doesn't reach (under eaves, etc.). Dehydration, not cold temperature causes the most winter injury, so be sure to keep things hydrated!
- ◆ Begin planning for next year's vegetable, herb and flower gardens.
- ◆ **Attend our Holiday Wreath Workshop Dec 4th**. Four time slots available to build your own fresh evergreen wreath with fragrant boughs and pinecones. Call us to reserve your spot! \$40 per wreath.
- ◆ Watch and treat for pests like scale, mealybugs and mites on plants overwintering inside. Treat with a granular systemic insecticide.
- ◆ To prolong bloom on gift plants (Poinsettias, Paperwhite or Amaryllis bulbs) water plants well and remove the decorative foil so excess water can drain.
- ◆ **Buy your Christmas trees, wreaths and poinsettias at Patt's!**

Winter Weather Protection

The weather can be pretty extreme in the winter, especially for evergreen plants. Drastic changes in temperature and harsh winds sap the moisture from the needles of evergreen trees and drain the life from broadleaved Rhododendrons, Laurels and more. Try FreezePruf or Cloud Cover this year—you'll be amazed by the difference in the health of your plants by Spring!



FreezePruf is an eco-safe spray that improves plants' natural cold tolerance up to 9.4 degrees! Developed by botanists, FreezePruf protects the plant externally and systemically by enhancing both its natural "anti-freeze"-like properties and its ability to survive ice crystal damage. The biodegradable formula is designed to resist washing away by rain or snow and one application lasts up to 6 weeks; simply spray on tender plants just before damaging frost is expected.

Cloud Cover is a clear, flexible polymer coating that holds moisture in plants and reduces stress caused by temperature extremes, transplant shock and dry environment. Use on plants that dry out too fast—hanging baskets and plants facing vacation neglect. Use as a protective barrier to damaging seasonal and environmental extremes (heat drought and moisture-robbing winds). Or, use when transplanting to speed recovery time.



Small Business Saturday

Join us for **Small Business Saturday** on November 27th. It's a great day to support your favorite local businesses the day after Black Friday and start your holiday season off right! As part of Small Business Saturday, join us for our annual **Evergreen**

“You can't buy happiness, but you can buy local, and that's kind of the same.”

Wreath Workshop! We'll show you how to construct your own holiday wreath using fragrant evergreen boughs, pinecones and other festive décor. \$40 per wreath, limited spaces available. Call us to reserve your spot! Workshop spaces available on Saturday November 27th as well as Saturday December 4th. While you're here, be sure to shop our great gifts for the gardener, Christmas trees, poinsettias, amaryllis bulbs and so much more! Watch our socials for details on a holiday centerpiece class in December!



Winter Blooms

Our favorite winter pastime is watching Amaryllis and Paperwhites grow inches each day right before our eyes and enjoying those cheerful blooms in dark winter months. We'll have our bulbs in mid-October. Amaryllis and Paperwhites both bloom indoors with ease, simply plant them in a container in potting soil or sand, place in a sunny window, water occasionally, sit back and watch them grow! Amaryllis come in a variety of colors in shades of pink, white and red and make great gifts for anyone on your list. Paperwhites can be planted in nearly any kind of container. Get creative with the media you use for planting—paperwhites can thrive in potting soil, but you can even use colorful rocks, sand, buttons, even LEGO! Simply fill a container with 3-4" of media that will allow room for the roots to spread. Nestle the bulb into the media so the top 2/3 is above the soil line. Fill the container with water so the water is just below the bulb.. It's especially fun to use clear containers so you can observe root growth. Paperwhites can also get quite tall, so you may want to tie the stems together with twine or a colorful ribbon.





PATT'S GARDEN CENTER
1280 PORT DRIVE
CLARKSTON, WA 99403
(509) 758-4104
<https://pattsgardencenter.com>

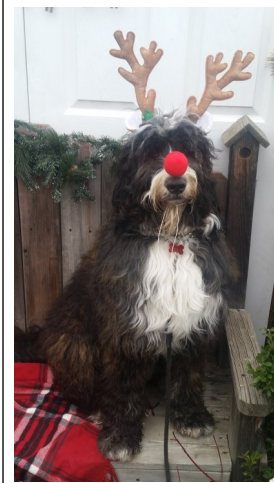
Gourd-geous Gourds

Arranging a pile of unusual pumpkins, gourds and squash is one of the best parts about the fall season here at Patt's. We love to showcase these colorful curcurbits with a project called 'Gourd-geous Gourds'! We use live succulents, dried flowers, moss, pinecones and more to create unique and long-lasting centerpieces to brighten your home or office. You can of course purchase one of our pre-made Gourdgeous Gourds or you can join us on any Saturday in October to create your very own! This project is great for all ages. We'll show you how to create your own masterpiece complete with all the supplies, tips and tricks. Get creative spend some time outdoors this month. \$45 per project.



Deck the Halls

As usual, our gorgeous selection of Washington-grown Christmas trees will arrive the week of Thanksgiving. We will also have handmade evergreen wreaths made right here at Patt's and customizable to your specifications.



We'll have Poinsettias, Paperwhites and Amaryllis bulbs and evergreen centerpieces, too! We have great gifts for your favorite gardeners like wooden or metal wall art, gloves, indoor pottery, plenty of Posie products, PNW-made food items and a whole lot more fun stuff. Come visit us this holiday season—yule be glad you did!